

## USER MANUAL

THANK YOU FOR YOUR PURCHASE

PLEASE READ THESE INSTRUCTIONS CAREFULLY PRIOR TO INSTALLATION / MAINTENANCE

### SPECIFICATIONS

**Wattage:** 5W

**LEDs:** 30\* SMD2835 LED Chips (In-Built) 180 degree beam angle

**Colour:** 2700K (Warm White) / 6000K (Daylight White)

**CRI:** >80

**Lumen Output of LEDs:** 1200lm (full brightness) / 400lm (low level) – PIR & Constant

**LED Life Expectancy:** up to 50,000 hours

**Illumination Area:** Low Level <6sq.m / Full Brightness <18 sq.m

**Sensor:** PIR Motion Sensor & Photoreceptor (light sensor)

**PIR Sensor Range:** 180° Angle / 2-4m Detection Range

**Battery Type:** LiFePO4 3.2V / 8Ah

**Battery Charge Time:** 8-10 hours

**Discharge Time:** Up to 5 nights (mode dependent)

**Solar Panel:** 5V 4.5W Monocrystalline Silicon

**IP Rating:** IP65

**Materials:** Aluminium + Polycarbonate + Tempered Glass

**Weight:** 2.8KG (approx.)

**Working Temperature:** -25°C ~ 50°C

**Working Humidity:** 10% - 90%

**Mounting:** Surface Mount (Ground spike optional)

**Functions:** MODE 1: PIR (low level 300lm to full brightness) / MODE 2: Constant On (low level 400lm) / OFF

**Included:** 1 x Solar Light with adjustable bracket, 1 x Body, 1 x Surface Mount, 12x M4 screws, 2x M10 Expansion Bolts

**Features:** On/Off Push Button, Adjustable, 2 Working Modes, In-built Photoreceptor (light sensor) & PIR Motion Sensor

**Optional:** Ground Spikes x2 (sold separately)

**UK REGISTERED DESIGN: 6450824**

**PHOTOMETRICS AVAILABLE UPON REQUEST**



### WARNINGS



- If any component is found to be damaged, cease use immediately.
- The unit may get warm whilst on for a period of time.
- Always take care when installing your solar light, ensuring it is not a hazard, particularly at head height.
- Fitting must be mounted and used in accordance with instructions.
- This Solar Light will not charge correctly if the panel is behind glass or artificial light is used.
- Due to temperature difference in and outside the fitting, condensation may be present internally but will not affect use.
- Do not tamper with wiring or batteries as this may result in a short circuit or shock.

### CLEANING & MAINTENANCE:

Occasional cleaning and care are recommended for this product. Wipe with a soft, slightly damp cloth to remove any surface dirt. To maintain efficiency, specifically clean the solar panel, LED lens and PIR on a regular basis. Also, keep the solar panel free of debris and snow to prevent reduced battery life or malfunction. Do not use abrasive cleaners or a lot of water as this could damage the fitting. Please refer to our website for more information on the best way to clean different materials.

### RETURNS:

**If purchased from a 3<sup>rd</sup> party, please contact your supplier. If purchased direct, contact us by phone or email:**

Lumena Lights Ltd, Centre 33 Long March, Daventry, NN11 4NR Tel: +44 1327 871 161 Email: [sales@lumenalights.com](mailto:sales@lumenalights.com)

**Our full returns policy is available on our website.**

**DISPOSAL / RECYCLING:** Waste Electrical Products & Batteries should not be disposed of with household waste. Please check with your local authority or contact us for more information. Please recycle packaging.

**Producer Registration Numbers: WEE/KC3440XY / BPRN0843**

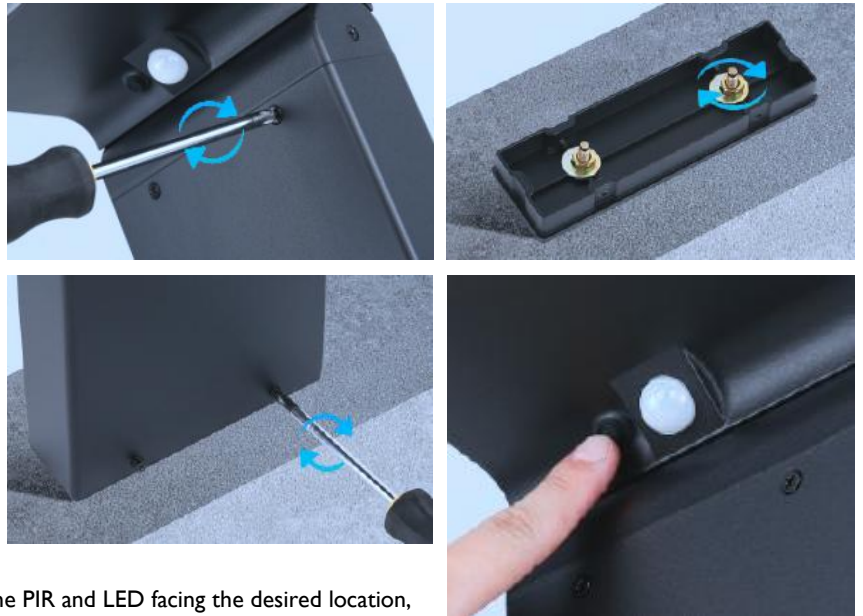
## INSTALLATION:

The Cresta is designed to be surface mounted onto a solid, flat structure. It is important that the installation location is carefully considered, avoiding shady areas. The best position is in full sunshine / south facing. Ensure there are no other lights which could interfere with the fittings, imitating daylight.

### **CHARGE FOR 1-2 FULL DAYS BEFORE FIRST USE**

#### **MOUNTING**

1. Attach the head to the body via the 4x screws, using a Phillips screw driver.
2. Experiment with positioning prior to final installation.
3. Place the base in the mounting position and mark both mounting holes. Fixing points 82mm centre to centre.
4. Drill 2x 10mm holes, at a 50mm depth for each of the expanding anchor bolts.
5. Remove the nut and washers from the expanding anchor bolts and insert securely into the drilled holes so that the expansion sleeve is flush with the wall and the threaded bolt protrudes at least 10mm.
6. Place the surface mount over the bolts and secure each in place with the flat washer, lock washer and nut. Tighten fully to enable the bolts to expand and grip securely.
7. Place the body of the unit over the base, with the PIR and LED facing the desired location, and secure in place with the 4x screws, using a Phillips screw driver.
8. Turn on the fitting via the push button on the front of the fitting to test, covering the solar panel to fully mimic darkness.
9. Adjust the angle of the head as per below.



If mounting to wood, follow the steps above, but use the relevant wood screws or bolts for your surface, instead of expansion bolts. M8 / M10 recommended.

#### **ANGLE ADJUSTMENT**

Choose between 2 angle adjustments.

- 90 degrees – align luminaire lugs with back slots
- 110 degrees. – align luminaire lugs with front slots

Loosen the 2x M4 side screws, adjust the head to the desired angle and secure in place by retightening 2x M4 side screws.



#### **SETTINGS:**

##### **MODE 1: PIR Motion Sensor (low level to full brightness) – Press Once**

Light remains on at low level brightness (300lm) until motion is detected within range. When triggered, light will remain on at full brightness (1200lm) for approximately 30 seconds after motion is detected; then return to low level. Maximum 12 hours.

##### **MODE 2: Constant On (low level) – Double Press after Mode 1 is activated**

A constant, low level light (400lm) for dusk to dawn illumination. Maximum 12 hours.

##### **POWER OFF – Press Once in either mode**

As the battery charge reduces, the illumination will gradually dim due to a lower voltage current. If extremely low battery charge is detected, the luminaire will default to power save, low level light.

**Ensure the solar panel and sensor are cleaned and cleared of debris at least every 3 months.**

#### **STORAGE:**

When storing this solar light, be sure to turn it to the off position by following the above steps (test by covering the solar panel). Max. 6 months storage when fully charged – recharge will be required periodically to prevent damage to battery over long periods of time. Follow the power off sequence prior to storing.



Full product range & more information: [www.lumenalights.com](http://www.lumenalights.com)