



**WARNINGS**



**PLEASE READ THESE INSTRUCTIONS CAREFULLY PRIOR TO INSTALLATION / MAINTENANCE**

- If a fitting is found to be damaged, cease use immediately.
- This is a Class I product and must be earthed.
- This unit must be fitted by a competent and qualified electrician.
- Install in accordance with IEE wiring regulations and current Building Regulations.
- To prevent electrocution, switch off mains supply before installing or maintaining this fitting. Ensure other persons cannot restore the electrical supply without your knowledge.
- This light fitting should be connected to a circuit with a 30Ma RCD fitted. Maximum 12-15 fittings on each circuit recommended.
- If replacing an existing fitting, make a careful note of the connections.
- All connections should be made as watertight as possible to avoid electrical shortage.
- When changing the bulb, always switch off at the mains & allow to cool before handling.
- Always use the correct type & wattage bulb. Never exceed the wattage stated.
- The unit may get warm whilst on for a period of time.



**Models:** SP600ESB-240V / SP600ESC-240V / SP600EST-240V

**Voltage:** 220-240v

**Max. Wattage:** 12W

**Bulb Holder:** ES / E27

**Recommended Bulb:** Candle / GLS LED

**IP Rating:** IP65

**Cable:** 0.75mm 3 Core (H07RN-F)

**Cable Length:** 0.5m (approx.)

**Product Height:** 0.6m

**Materials:** Aluminium, Polycarbonate (frosted)

**Finish:** Black (powder coated), Cocoa (anodised), Titanium (anodised)

**Mount:** Surface Mount (M5) / 400mm Ground Spike

**INCLUDED:** Post Light, Ground Spike c/w 4x M5 Nuts & Bolts, Connection Box

COMPATIBLE WITH LUMENA DUSK TO DAWN LED LAMP



**3 YEAR  
GUARANTEE**

see website for  
more details  
Reduced warranty for  
specific components

**CLEANING:**

Occasional cleaning and care is recommended for this product. Please refer to our website for the best way to clean different materials.

**CONDENSATION:**

Condensation can occur due to the warmth inside the fitting produced by the lamp and the cold air outside. If this is noticed, on a dry day, turn off the power supply, safely remove the head, and wipe dry with a soft cloth. It is recommended to always install/change the lamp on a dry day to prevent trapping damp air inside the fitting.

**RETURNS:**

**If purchased from a 3<sup>rd</sup> party, please contact your supplier. If purchased direct, contact us by phone or email:**  
Lumena Lights Ltd, Centre 33 Long March, Daventry, NN11 4NR Tel: +44 1327 871161 Email: [sales@lumenalights.com](mailto:sales@lumenalights.com)

**Our full returns policy is available on our website.**

Waste Electrical Products should not be disposed of with household waste. Please check with your local authority or contact us for more information. Please recycle packaging whenever possible.

**Producer Registration Numbers: WEE/KC3440XY**

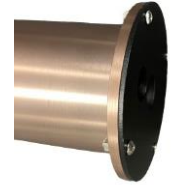
Full product range & more information: [www.lumenalights.com](http://www.lumenalights.com)

## INSTALLATION:

**IMPORTANT:** Cable should be laid inside armoured conduit to protect from water-logging, chemicals found in soil and damage. If buried, it should be buried to at least 0.5m below ground to reduce damage risk. Supplied internal connection box and cable should be pushed back inside the tube when installed, not buried.

This bollard should be securely fixed to a solid surface, unless the supplied ground spike is used, in which case the spike should be installed directly into soil. For fixing to a new concrete base, root fixing bolts can be used (not supplied). Anchor bolts should be used if fixing into existing paving slabs, concrete or similar. For decking installation, good quality wood screws should be used. Ensure all screws / bolts are stainless steel or zinc plated to avoid corrosion.

1. Remove the 4 x cross head screws and nuts from the base and then remove the ground spike which is stored internally for transit.
2. Unscrew the head from the main body (turning anti-clockwise).
3. Unscrew the base from the body (turning anti-clockwise).



### SURFACE MOUNT

- o Position the mounting base in the desired location, ensuring the supply cable is central to the base with plenty of slack for ease of wiring (approx. 300mm recommended).
- o Mark the mounting holes through the base on the surface.
- o Remove the base and drill the mounting holes, as relevant to your desired surface / fixings.
- o Secure the mounting base in place with the correct fixings for your surface. NOTE: if preferred, the base can be removed for easier installation (threaded).



**IMPORTANT:** Do not overtighten the surface mount base as this could lead to fracture.

### SPIKE MOUNT

- o Attach the ground spike to the base using the supplied M5 nuts and bolts.
- o Thread the power cable through the offset cable access hole of the ground spike and up through the base.
- o Dampen the ground to make it soft and push the ground spike securely into the ground. Do **NOT** use heavy impact tooling which could damage the base.



### CONTINUE

4. Lay the post on a soft covering, e.g. blanket, beside the location to expose the in connection box and wire the post to the power supply as per below (see WIRING below).
5. Remove the top spring clip from the bulb holder and lift bulb holder from post.
6. Reattach the post to the base (turning clockwise), ensuring the bulb holder is free and not rotating with the post to prevent the cable twisting.
7. Re-insert the bulb holder ensuring it is level. A lower spring clip sits on the inner rim to support the underside of the bulb holder, and another on top (previously removed) to support the top of the bulb holder.
8. Insert lamp (see LAMP INSTALLTION below) and test
9. Carefully place the head over the bulb, being careful not to knock or damage the bulb, and refasten to the main body (clockwise). **IMPORTANT:** Ensure the white, rubber o-ring on the threaded polycarbonate lens is present and not twisted. Be careful not to cross-thread.



## WIRING:

**Always ensure the power supply is turned off prior to wiring**

The supplied connection box can be used with 0.75mm<sup>2</sup> 3 core cable (10mm diameter). To wire:

1. Unscrew and remove the connection box lid.
2. Pop out the connector block.
3. Pierce the rubber grommet and push the power cable through to the inside of the box.
4. Wire each inner cable to the correct terminal, securing in place with the terminal screw. Ensure the screw clamps the conductor, not the inner sheath, and that all cables are secure with no loose conductor strands (see terminals info).
5. Push the connector block back inside the casing fully, ensuring the rubber grommets have not dislodged.
6. Refasten the lid to the connector block being careful not to trap any wires.



### TERMINALS (labelled to left):

N = Neutral / Blue

⊕ = Earth / Yellow & Green

L = Live In / Brown

Colours of wire sleeving may vary slightly – Test prior to use.

## LAMP INSTALLATION / REPLACEMENT:

**Always ensure the power supply is turned off prior to changing the lamp. Lamp may be hot if it has been in use.**

1. Unscrew the head from the main body (turning anti-clockwise).
2. Ensure the bulb holder is level. A lower spring clip sits on the inner rim to support the underside of the bulb holder, and another on top to support the top of the bulb holder. See additional images above.
3. Insert E27 light bulb (screw in)
4. Carefully place the head over the bulb, being careful not to knock or damage the bulb, and refasten to the main body (clockwise).  
**IMPORTANT:** Ensure the white, rubber o-ring on the threaded polycarbonate lens is present and not twisted. Be careful not to cross-thread.

